

Effect of Twin Block Appliance to Advance a Short Mandible on a Growing Patient – A Case Report

By : Dr. Ahmed Saleh Abdurabu DDS

Introduction

Aim of this study was to see the effect of twin block effect in mixed dentition phase. Twin block from its inception and evolution of the appliance itself has been widely accepted as a more competent Class II corrector compared to earlier bulky monobloc appliances. The effect of the twin block functional appliances is mostly dentoalveolar having a small skeletal effect. Functional appliances can be used successfully when used in growing patient with certain Class II malocclusion.

Method & Materials

Clark Twin-Block Appliance was Fabricated



Advisor : Estomaguio Gary A. DMD,PhD

Discussion

Treatment objectives was to enhance the mandible , proper overjet & overbite and achieve acceptable profile. the appliance inserted after leveling and alignment using 4X2 system

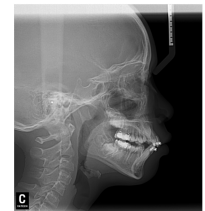
Result



SNB = 76

E-Line = 6mm

overjet = 8mm



SNB = 78

E-Line = 3.8mm

overjet = 4mm

Conclusion

Use of this appliance during growing phase with good patient co-operation produce the skeletal effect, and some dentoalveolar effect is also there .

